



"SAFE PASSAGE FOR HYDRAULIC HOSES"

HYDRAULICS PVT. LTD.



Product Catalog

House of Hydraulics

HIFLEX HYDRAULICS PVT. LTD. is the Leading name in Manufactures of Flexible Hose Assemblies.

The wide product range includes Steam Hose Assemblies. Low and Hi Pressure Hydraulic Hose Assemblies, Adaptors and Variety of Fittings.

The Company, established long back in 1977, has today won the satisfaction of the Clientele spread over in the varied application Industries.

The Simple Secret is the quest for Excellence in Quality, Design And Service.

The team of Technical Experts at **HIFLEX** takes enough pain to have in-depth study of real application. Products designed precisely, manufactured in stringent quality controls and tested thoroughly, finally get the **HIFLEX** Mark. The mark that assures products loaded with a weighted performance.

The Expertise coupled with more than 26 year Experience works finally, and so the products.

QUALITY POLICY

We will provide Products & Services of the best standard to higher-up the expectation of the Customer.

Hardik Quality Philosophy is : "We do not compromise, because our Customers do not."

QUALITY KEY FACTORS :

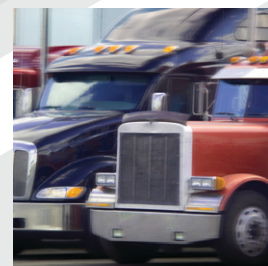
- ❖ Commitment to Dedication, Innovation, Technical Up gradation and Best Value for Money.

WE COMMIT TO :

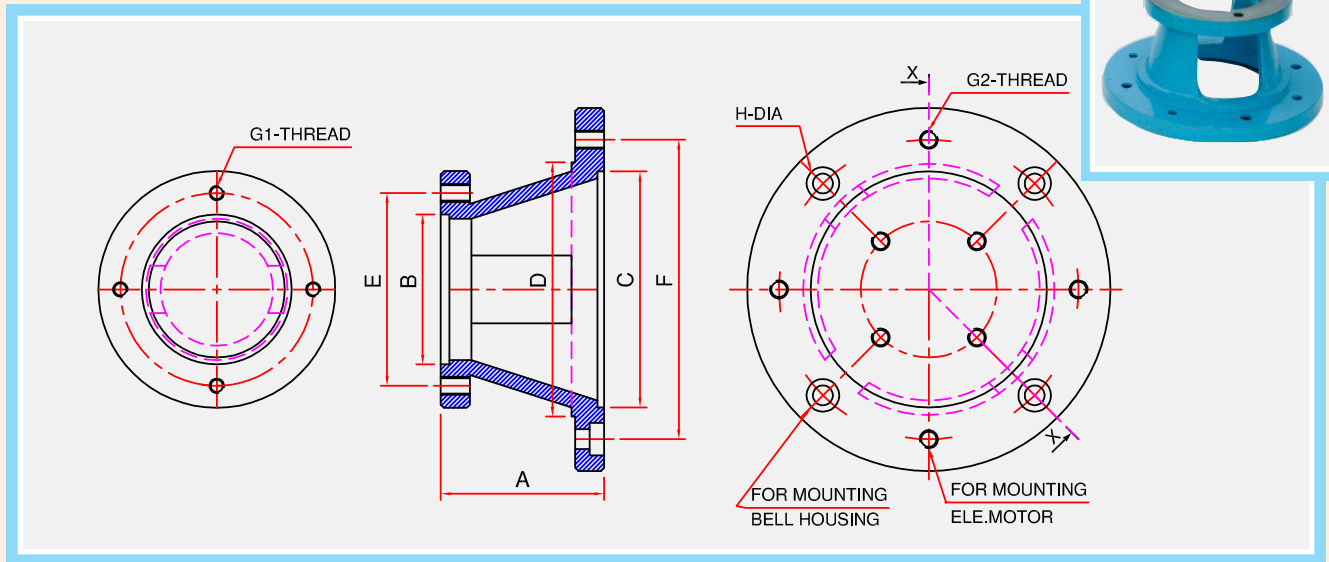
- ❖ Understand real application and Customer's expectation.
- ❖ Maintain Fully Integrated Quality Management System to meet the standards internationally accepted.
- ❖ Design the products most precisely to meet exact requirement and to perform the best, in cost effective manner.
- ❖ Adopt best manufacturing process well equipped with Technical capacities.

QUALITY VALUES :

- ❖ Maintain business ethics to strengthen relationship.
- ❖ Creativity and teamwork at the workplace.
- ❖ Respect for our Customers, Suppliers, Employees and Community.



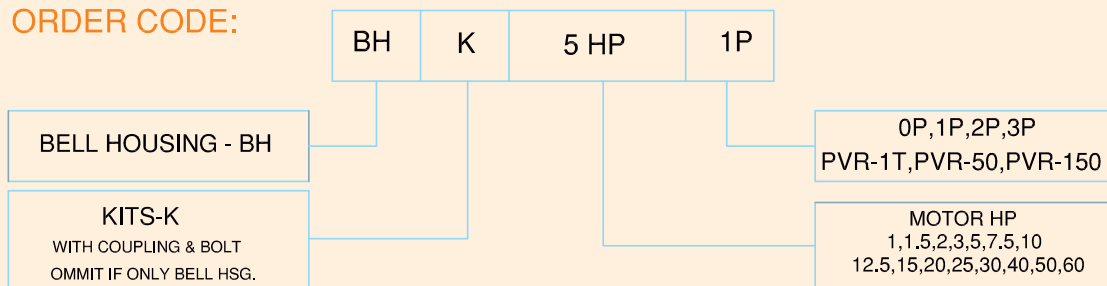
HI-FLEX BELL HOUSING FOR GEAR PUMP



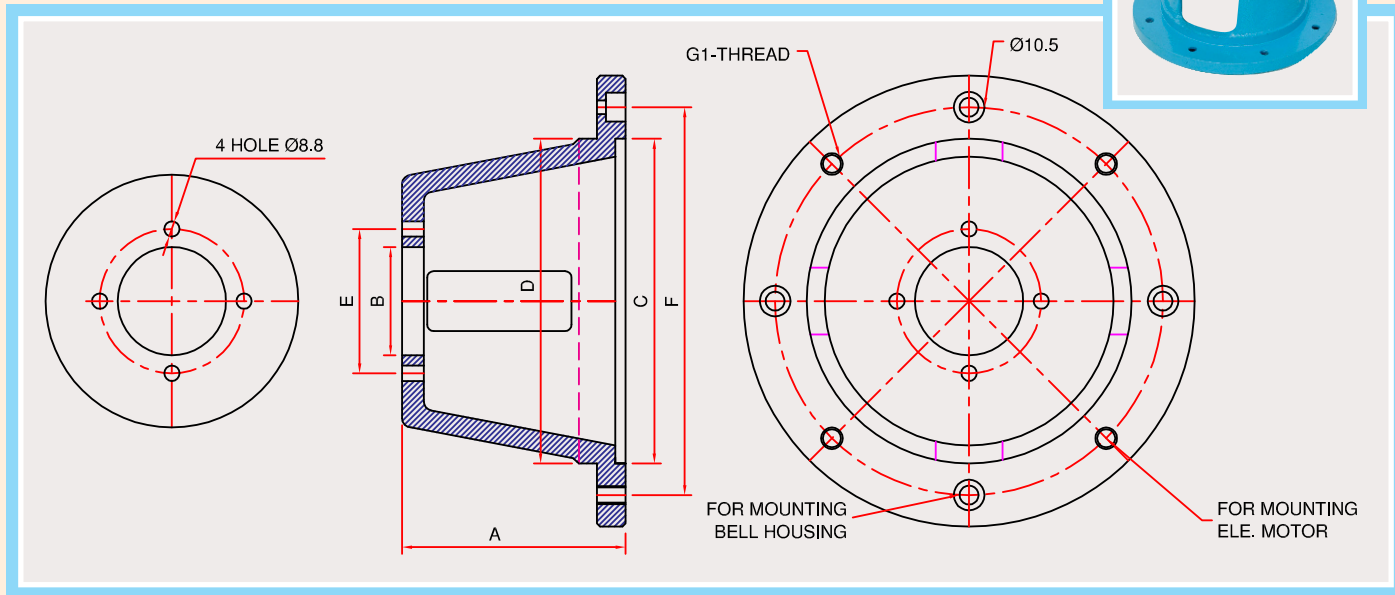
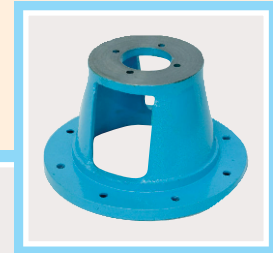
Dimensional Details

FRAME	HP	A	B	C	D	E	F	G1	G2	H
71	0.5	75	82.6	110	115	106.2	130	M10	M8	8.5
80L	0.75,1	80	82.6	130	140	106.2	165	M10	M10	8.5
90S/L	1.5,2	100	82.6	130	140	106.2	165	M10	M10	10.5
		122	101.6			145.9				
100L / 112M	3,5	110	82.6	180	180	106.2	215	M10	M12	10.5
		122								
100L / 112M	3,5	145	101.6	180	180	145.9	215	M12	M12	10.5
			127			180.8		M16		
132S/M	7.5,10	145	82.6	230	230	106.2	265	M10	M12	10.5
		170								
132S/M	7.5,10	170	101.6	230	230	145.9	265	M12	M12	10.5
			127			180.8		M16		
160M/L-180M/L	12.5,15,20,25,30	200	82.6	250	250	106.2	300	M10	M16	10.5
160M/L-180M/L	12.5,15,20,25,30	200	101.6	250	250	145.9	300	M12	M16	10.5
			127			180.8		M16		
200 L	40	210	101.6	300	300	145.9	350	M12	M16	10.5
			127			180.8		M16		
225 S / M	50 , 60	240	101.6	350	300	145.9	400	M12	M16	13
			127			180.8		M16		

ORDER CODE:



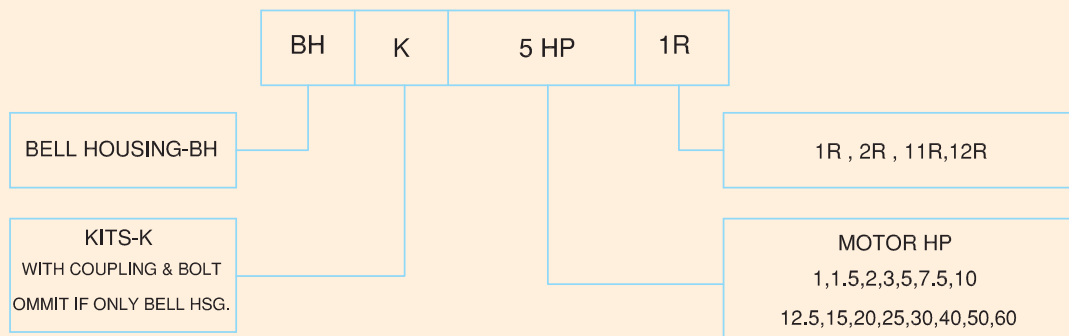
HI-FLEX BELL HOUSING FOR PISTON PUMP



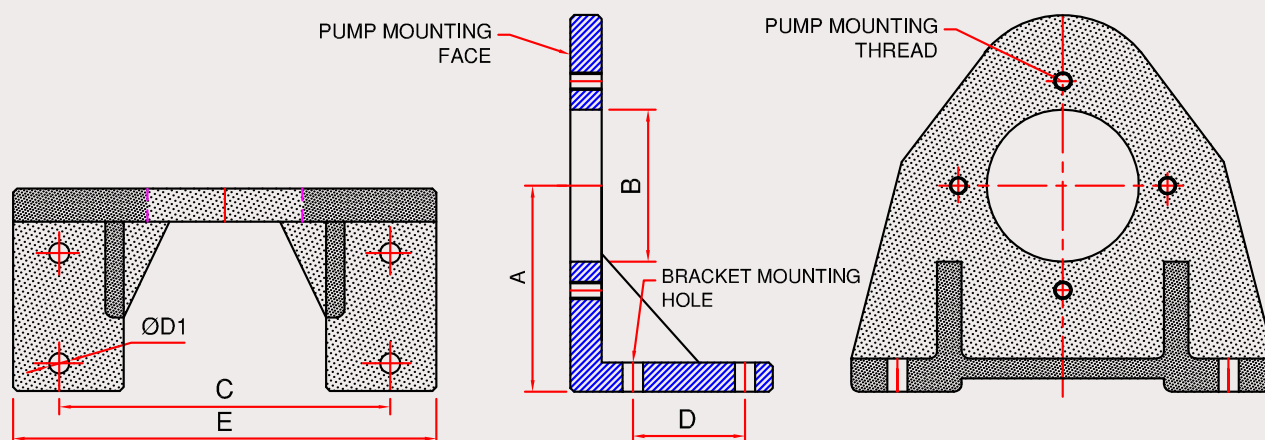
Dimensional Details

MOTOR HP.	A	B	C	D	E	F	G1
1,1.5,2 HP	130	60	130	130	80	165	M10
	122						
3,5 HP	122	60	180	180	80	215	M12
	145						
7.5 ,10 HP	170	60	230	230	80	265	M12
	145						
12.5,15,20,25,30 HP	200	60	250	250	80	300	M16
40 HP	210	60	300	300	80	350	M16
50 , 60 HP	240	60	350	300	80	400	M16

ORDER CODE:



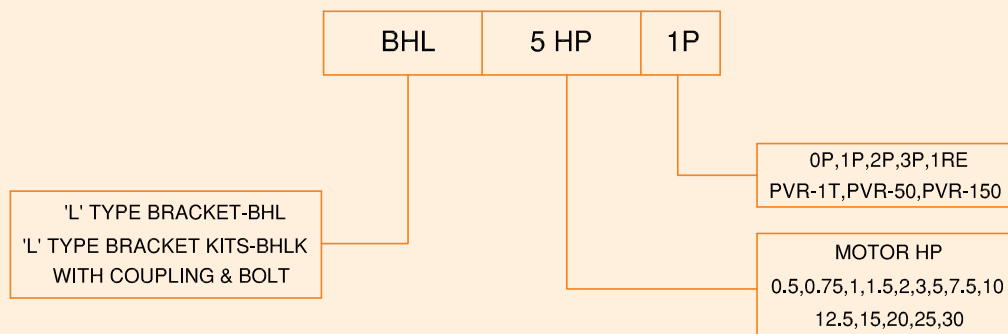
HI-FLEX 'L' TYPE BRACKET FOR PUMP



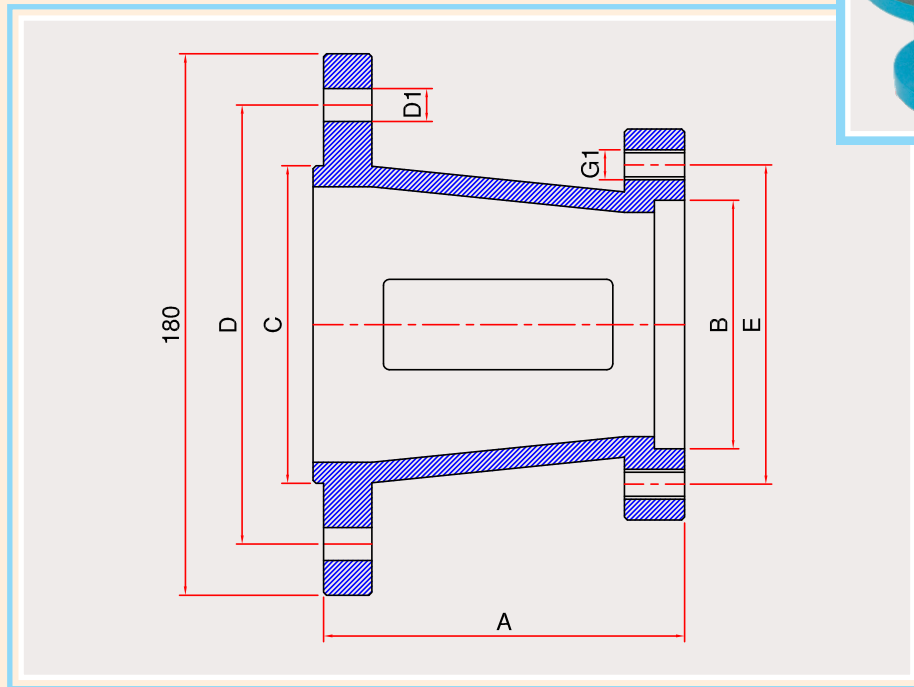
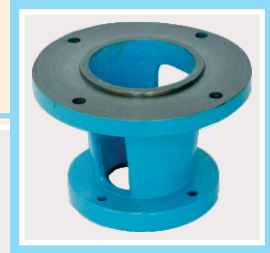
Dimensional Details

MOTOR	PUMP	A	B	C	D	E	D1
0.5	1P	71	82.6	150	50	182	11
0.75,1	1P	80	82.6	150	50	182	11
1.5,2	1P,1R	90	82.6 60	150	50	182	11
3	1P,2P,3P,1R	100	82.6/101.6 127/60	190	60	228	11
5	1P,2P,3P,1R	112	82.6/101.6 127/60	190	60	228	11
7.5,10	1P,2P,3P,1R	132	82.6/101.6 127/60	230	60	272	13
12.5,15,20	1P,2P,3P,1R	160	82.6/101.6 127/60	270	80	322	13
25,30	1P,2P,3P,1R	180	82.6/101.6 127/60	270	80	322	13

ORDER CODE:



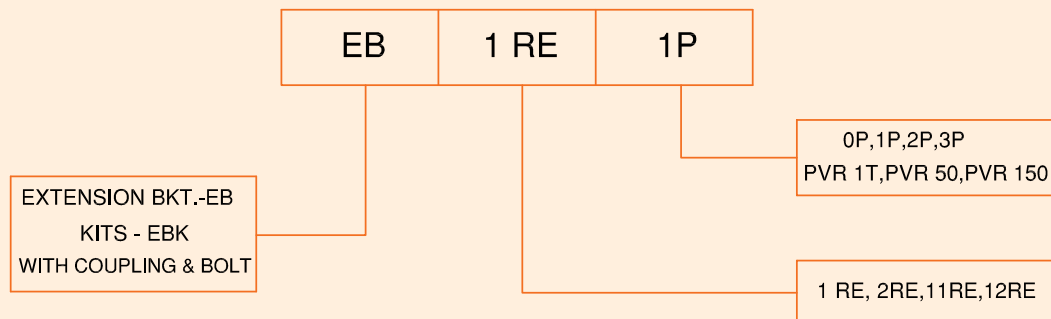
HI-FLEX EXTENSION BRACKET FOR PUMP



Dimensional Details

BRACKET	PUMP	A	B	C	D	E	G1	D1
EB 1RE	1P,PVR 1T	120 87,92	82.6	101.6	156	106.2	M10	10.5
EB 1RE	2P,PVR 50	120 90,100	101.6	101.6	156	145.9	M12	10.5
EB 1RE	3P,PVR 150	130	127	101.6	156	180.8	M16	10.5
EB 11RE	2P,PVR 50	130	101.6	113.8	156	145.9	M12	18
EB 11RE	3P,PVR 150	130	127	113.8	156	180.8	M16	18
EB 12RE	3P,PVR 150	130	127	113.8	140	180.8	M16	11

ORDER CODE:



HI-FLEX NYLON SLEEVE SERIES FLEXIBLE COUPLING

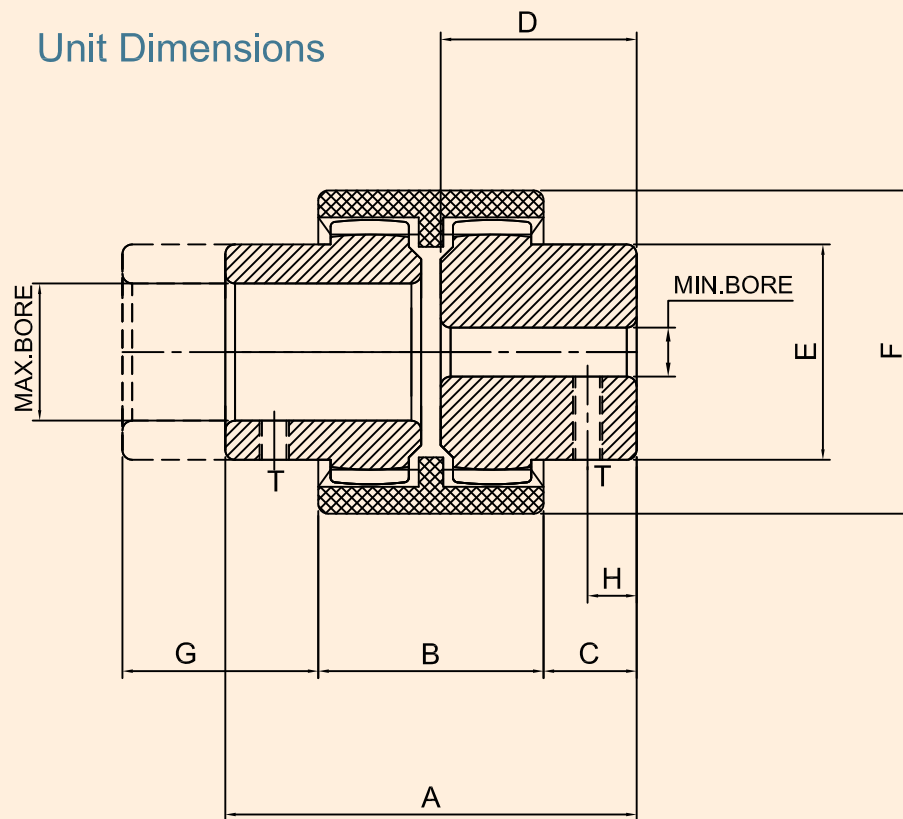
Features & Description

The series is a standard coupling with two hubs, a nylon sleeve, and retaining rings depending on the model selected. The coupling has a precision molded nylon sleeve and powder metal hub with no bolts, pins, flanges, or protrusions that could have an effect on balance or operational safety. Since no lubrication is used, the couplings can readily be adapted to many applications including vertical and blind installations.

- Compact in size
- Maintenance Free - No Lubrication required
- Can accommodate axial, angular, and parallel misalignment
- Easy to assemble
- Electrically insulating
- Can be used in temperature ranges from -25° to 80° C
- Nylon sleeves has high resistance to condensation and water, hydrocarbon based petroleum, and alcohols
- Not ideal for use with acids, benzyl based products, or glycols



Unit Dimensions



HI-FLEX NYLON SLEEVE SERIES FLEXIBLE COUPLING

Unit Dimensions

Table-1

Coupling Size	Total Length A (mm.)	Sleeve Width B (mm.)	Hub Width C (mm.)	Gear length D (mm.)	Boss O.D. E (mm.)	Sleeve O.D. F (mm.)	Clearance G (mm.)	Metric set screw H (mm.) T Size	
NC 19	54	37	07	25	30	48	18	6	M5
NC 24	56	41	7.5	26	36	52	18.5	6	M5
NC 28	84	46	19	40	44	66	21	10	M6
NC 38	84	48	18	40	58	83	22	10	M8
NC 48	104	50	27	50	68	100	23	10	M8
NC 65	144	72	36	70	96	140	34	20	M10

Note: * Bore with key way gear coupling also available.

* Gear length variable also available.

Performance Data

Table-1

Coupling Size	Torque Capacity		Maximum	Misalignment			Weight ¹	Bore Size ²	
	Nominal	Maximum	Speed	Angular	Axial	Parallel		Nominal	Maximum
	Nm	Nm	RPM	Degree	mm	mm	kg	mm	mm
NC 19	16	32	8000	1° Per Hub	+/-1	0.3	0.3	09	19
NC 24	20	40	8000			0.4	0.5	10	24
NC 28	45	90	8000			0.4	1.1	10	28
NC 38	80	160	6000			0.4	1.9	14	38
NC 48	140	280	5000			0.4	3.2	14	48
NC 65	390	780	3800			0.6	8.7	20	65

Note: * 1 indicate: weight is calculated using minimum bore and standard length.

* 2 indicate: minimum and maximum bore size are given for straight bore.

HARDIK ENGINEERS BELL HOUSING PRICE LIST

DT : 01/11/17

MOTOR H.P.	PUMP CODE	B.H. HEIGHT	B.H. CASTING	L' BKT ONLY	GEAR COUP. H& K ONLY	B.H.KITS CASTING	L' BKT KITS
0.5	OP,1P	75	390	440	220	625	665
0.75,1	OP,1P	80	630	440	220	880	665
1.5,2	OP,1P	100	690	550	370	1080	910
1,1.5,2	1R,1P,1T	121	790	*	410	1210	*
0.75,1,1.5,2	1R,1T	130	790	550	410	1190	910
1.5,2	2P	100	680	*	370	1080	*
1.5,2	2P,PVR 50	122	860	*	410	1290	*
1.5,2	3P,PVR 150	130	920	*	640	1620	*
3,5	OP,1P	110	810	810	370	1210	1180
3,5	1R,1T	122	890	*	390	1300	*
3,5	1R,1T	124	*	810	390	*	1180
3,5	OP,1P,1R,1T	145	960	*	440	1450	*
3,5	2P,PVR 50	145	1140	810	460	1630	1180
3,5	3P,PVR 150	145	1010	840	760	1720	1450
3,5	GR 40	165	1240	*	460	1800	*
7.5,10	OP,1P,1T,1R,2P	145	1270	*	730	2000	*
7.5,10	1T,1R,1P	170	1520	1150	850	2350	1750
7.5,10	2P,PVR 50	170	1560	1150	850	2400	1750
7.5,10	3P,PVR 150	170	1670	1180	850	2540	1800
7.5,10	GR 40	171	1670	*	850	2540	*
7.5,10	GR 45 TO 70	205	2970	*	850	3900	*
12.5,15,20	1P,1T,1R,2P,3P	189	*	1830	1000	*	2860
12.5,15,20	1P,1T,1R,2P,3P	200	2200	1830	1110	3320	2860
12.5,15,20	1P,1T,1R,2P,3P	205	*	1830	1110	*	2860
25,30	1P,1T,1R,2P,3P	189	*	*	1000	*	*
25,30	1P,1T,1R,2P,3P	200	2200	1860	1110	3360	2890
25,30	1P,1T,1R,2P,3P	205	*	*	1110	*	*
40	1R,1P,2P,3P	210	3220	*	2610	5740	*
50,60	1R,1P,2P,3P	250	6070	*	2610	8660	*

EXTENSION BRACKET

EXT.BKT.	1RE 1P	87	490	*	370	850	*
EXT.BKT.	1RE 1P,1T	92	490	*	370	850	*
EXT.BKT.	1RE 1P,1T	120	830	*	410	1250	*
EXT.BKT.	1RE 2P	90	660	*	370	1030	*
EXT.BKT.	1RE PVR 50	100	670	*	410	1060	*
EXT.BKT.	11RE 2P,PVR 50	130.5	690	*	410	1160	*
EXT.BKT.	1RE,11RE 3P,PVR 150	130	920	*	725	1590	*
EXT.BKT.	12RE 3P,PVR 150	130	940	*	725	1640	*

Address: Plot no.1102/D, Nr.Water Tank, Phase III,G.I.D.C.Estate,Vatva,AHMEDABAD 382445

Ph.(079)25834903,4,5,25892004,Email : hardik@hardikengineers.com



HI FLEX HYDRAULICS PVT. LTD.

: MARKETING OFFICE :

Plot No. 1102 / D, Near Water Tank, Phase III, G.I.D.C. Estate,
Vatva, Ahmedabad - 382 445. Gujarat (INDIA)

Phone : 079 - 25834903-904-905, 25892004, 25897490

Mo : 98240 13482, 96013 49528, 98240 53528 / 98240 45292

E-mail : hardik@hardikengineers.com / hardik@hardikhydraulics.com

: MANUFACTURING FACILITY :

18, Kesar Sopan Industrial Hub,

Beside Sarvoday Hotel To Moraiya Village Road,

Sarkhej Bavla Road, Village : Moraiya, Taluka : Sanand,

District : Ahmedabad-382 213. Mo : 9924055532 / 9924055524

E-mail : hose@hydraulicandsystems.com,

E-mail : info@hi-flex.net • Web : www.hi-flex.net

Web : www.hi-flex.net